

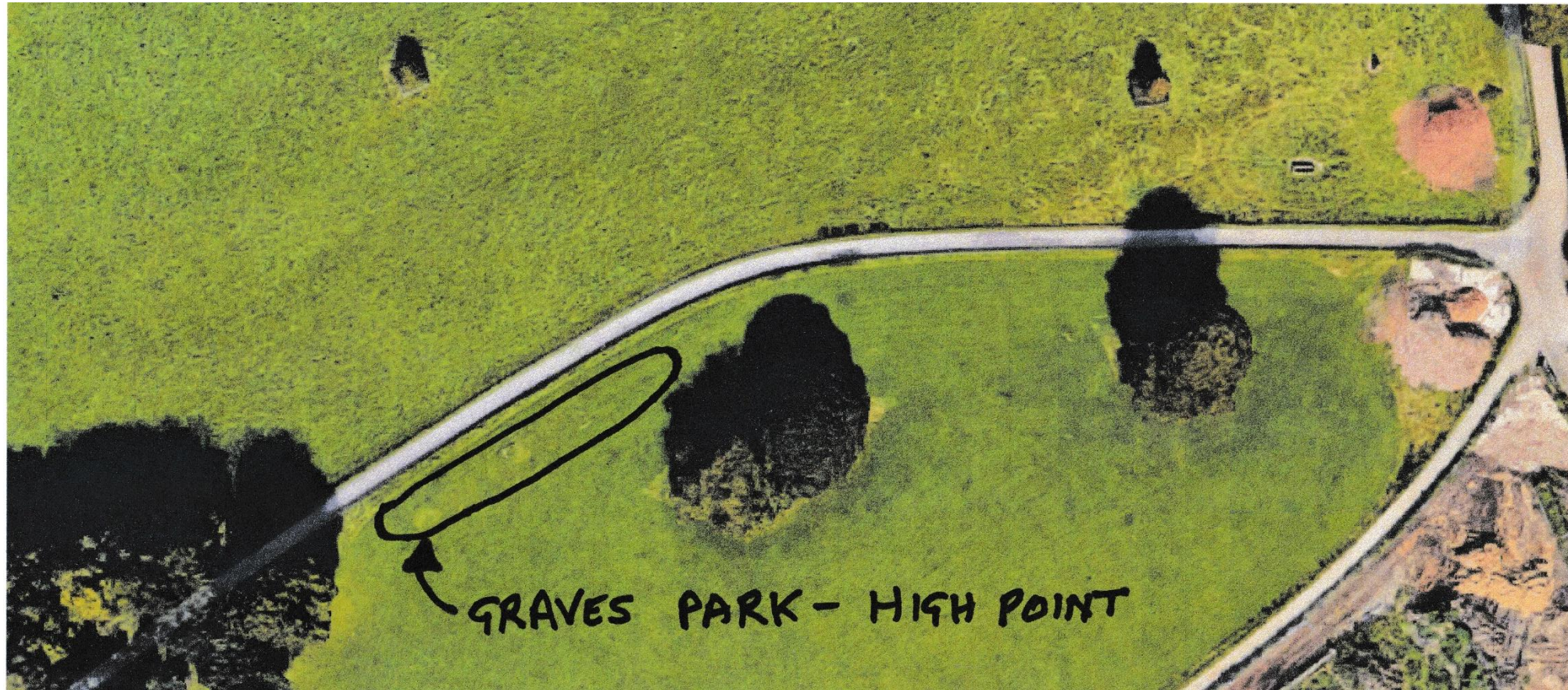
Graves Park – The High Point



Tony Spillane
26th Sept 2019

Graves Park – The High Point

- The highest point in Graves Park deserves some archaeological study.
- It is currently open pasture land, supporting the animal farm



Graves Park – The High Point

- This location offers excellent views to the North, West, and South
- The Norton Church (St James, c.1170) is not on the high point, suggesting it was deliberately separated from a previous “sacred / beliefs” location.
- The east / west access footpath to Norton Hall / Manor has a deliberate curve in it to avoid going over this high-point
- The nearby ancient barrow earthworks shows that there has been habitation in this location for centuries – therefore why not make something at the summit?
- Possibly, the wide trackway that runs from the Charles Ashmore carpark towards Norton Hall actually stopped at the high point, and pre-dates Norton Hall / Manor?

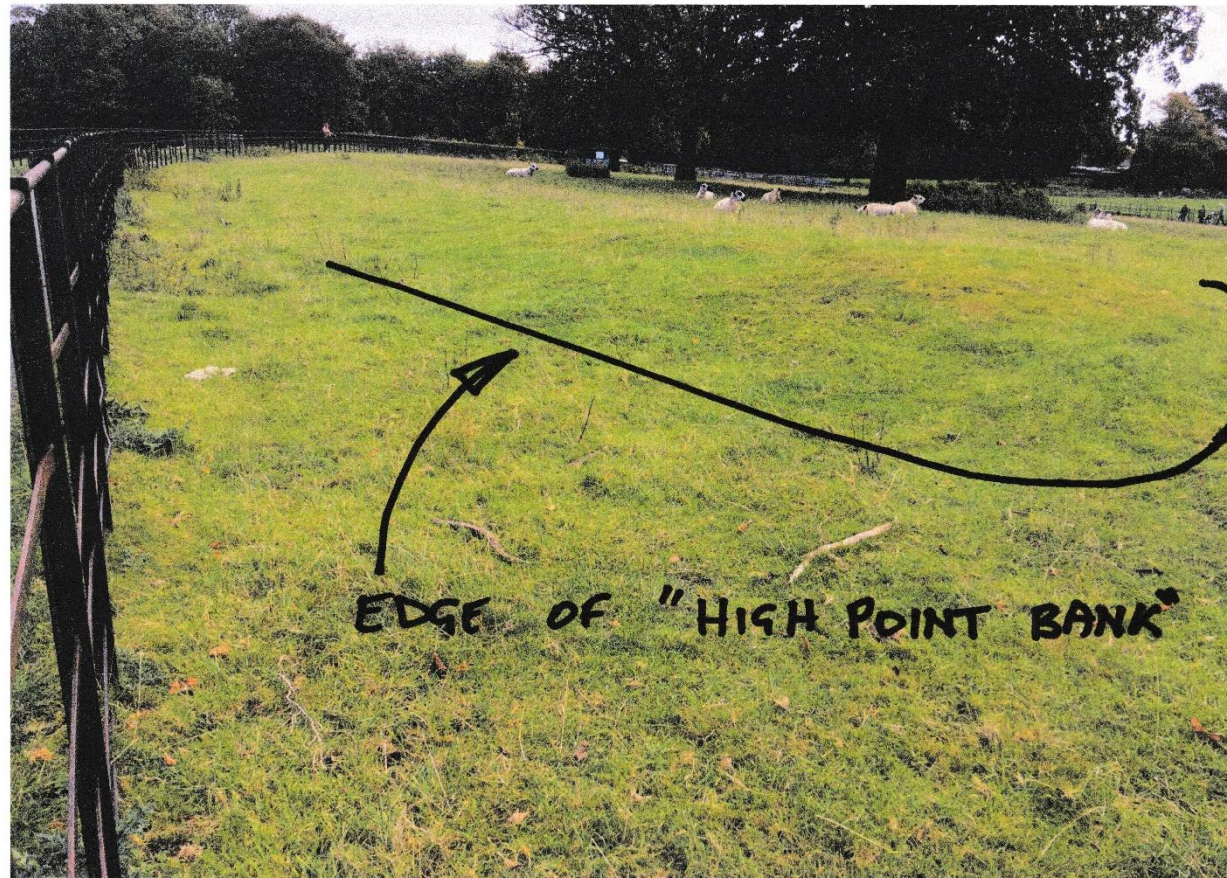
Graves Park – The High Point

- Looking at the i-maps shows the possibility of earthworks at this location:-



Graves Park – The High Point

- Looking at the ground shows an earth bank 'hump', which has a sudden ending at its western end:-



Graves Park – The High Point

- For these reasons, it is suggested that some further archaeological research is conducted in this area.